



ASPHALT PAVEMENT
ASSOCIATION OF OREGON



Safety
Workforce
Sustainability
Engineering



APAOEF
Marketing
Legislative
Quality

Safety

- **SMPAC**
 - Designer site visits
 - Billboards!
 - Day v. night
 - Near Miss Reporting
- Construction Staging Meetings
- Mobility Advisory Committee
- APAO Care
- Speed Safety Cameras
- Driver's Education



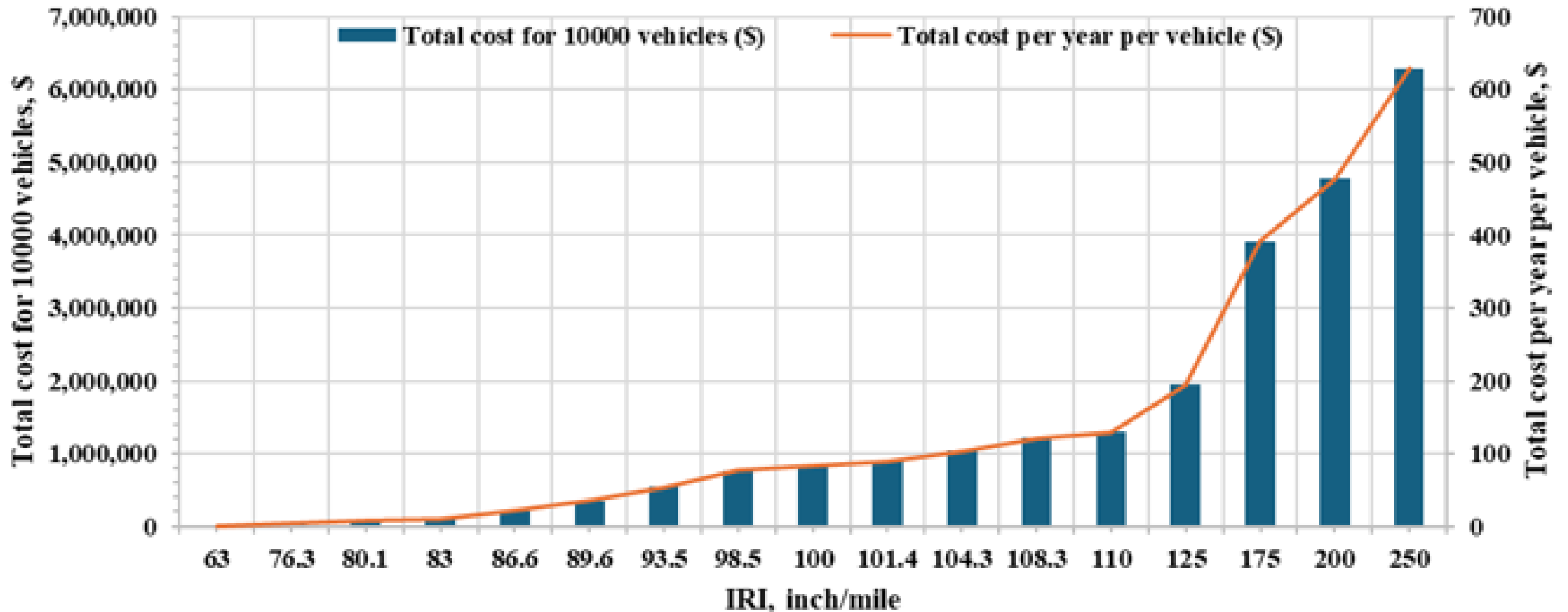
Sustainability

- **EPDs**
- **Energy Star**
- **LCTM Grants**
- **National Committees**
- **Innovative Procurement**
- **Recent Positive Research Results**

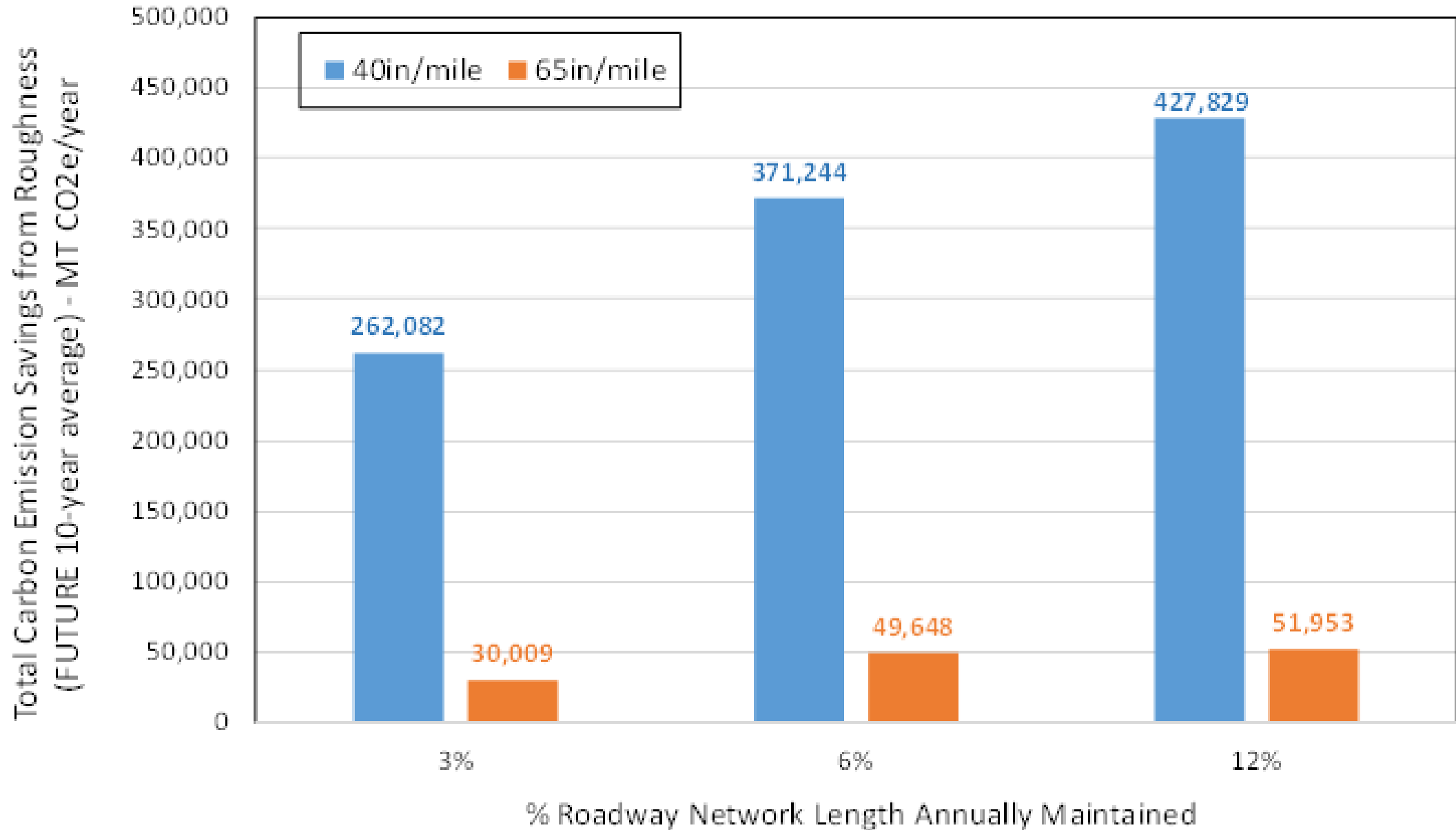


Recent Research

The Impact of Declining Roadway Conditions on Road User Costs and Greenhouse Gas Emissions



Smoothness = Efficiency



Specifications

Specification Committee Topics

Alternatives to Hydrated Lime

Additive Injection Point

Balanced Mix Design

Milling & Surface Prep

Rut Testing

Smoothness

HiMod Asphalt

Local Agency Outreach



APWA OREGON CHAPTER



Legislative Issues

Federal

- FHWA Policies – LCCA
- DBE Program
- Reauthorization – 2026!

State

- Transportation Infrastructure Funding
- Automated Speed Enforcement for Work Zones
- Climate policies
- PLAs

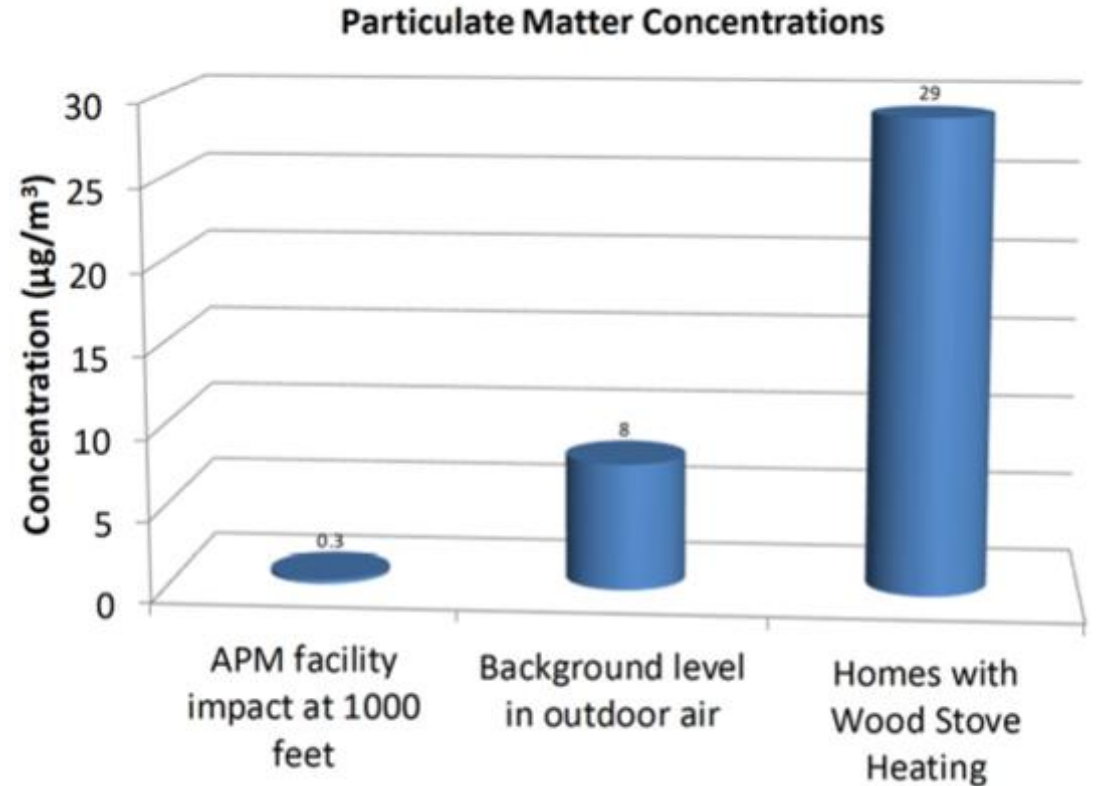
Website Updates



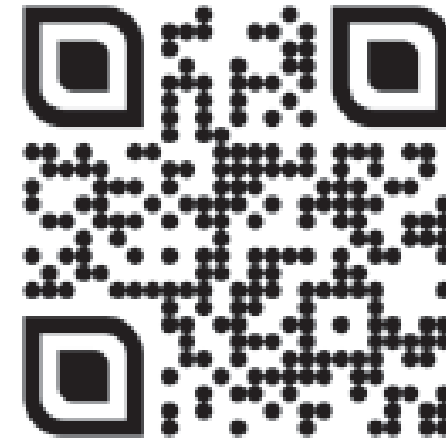
STEAM, NOT SMOKE

"Most visible emissions from an asphalt plant's stack are just steam resulting from the drying of aggregate."

-National Asphalt Pavement Association







How to Apply:

Interested in joining the leadership team or becoming a member of Women of Asphalt - Oregon? Please email Geordan Skyles at geordan.skyles@gcinc.com

geordan.skyles@gcinc.com

Member Outreach



asphalt_paving_oregon ...

Asphalt Pavement Association of Oregon

33 posts 158 followers 88 following

Asphalt Paving Association of Oregon (APAO) is a nonprofit trade organization dedicated to continuous quality improvement... more

5240 Gaffin Rd SE, Salem, Oregon 97317

apao.org

Followed by [petesipos](#), [marylandasphaltassociation](#), and [nolanlohman](#)

Following ▾ Message +8



PAVING AWA...



SYMPOSIUM



WORKFORCE



APAO BOARD



SCHOLARSHI...



WORKSHOPS

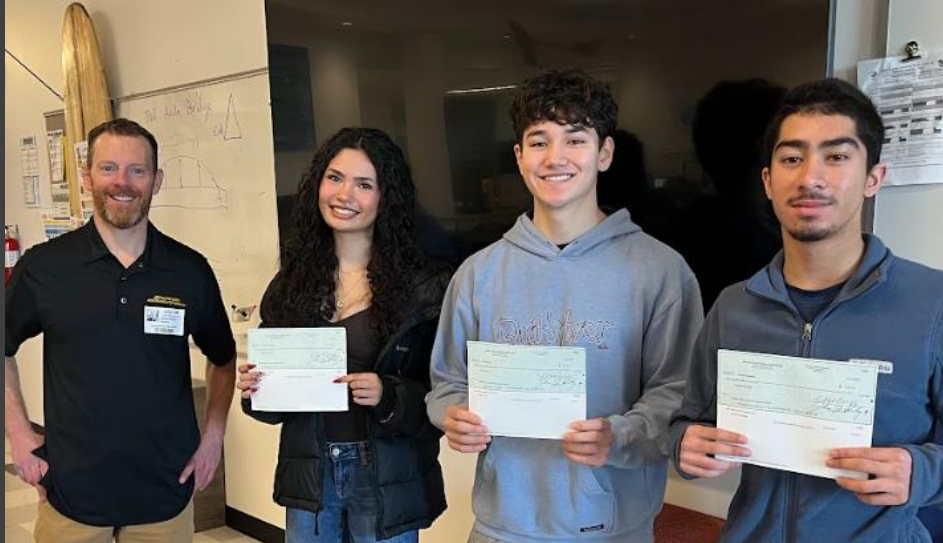
TRAINING



TRAINING

- 2023-2024 total students 207
- 2024-2025 total students 246 (most since 2012)
- Projected yearly numbers 225
- We are offering 22 total classes
- Recertification classes throughout the season as well
- To date we have 205 students registered (176 class 29 recert).

Workforce



- Teacher Continuing Education
- Work-Based Learning Project
- OIT Paver Nights
- High School Internships

FAMILY APARTMENTS
SURF VIEW VILLAGE
 N COAST HIGHWAY • NEWPORT, OR 97365

PROFESSIONAL SEAL

SHEET DATES

ISSUE DATE: MAR. 1, 2019

REVISION	

JOB NUMBER

1833680

SHEET NUMBER

C1.2

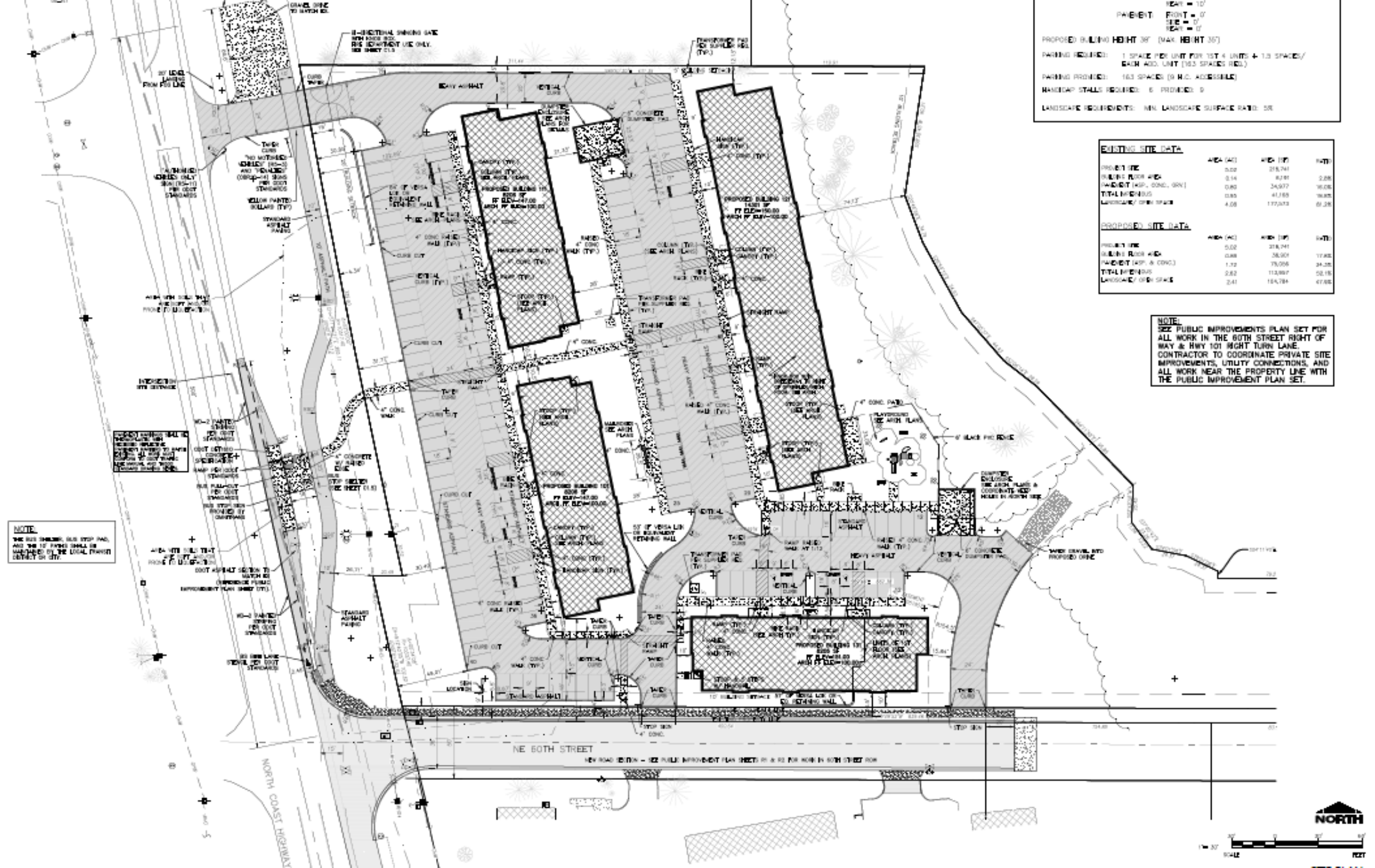
PROPOSED BUILDING HEIGHT 30' (MAX. HEIGHT 30')
 PARKING REQUIRED: 1 SPACE PER UNIT FOR 1ST 4 UNITS + 1.0 SPACES/ EACH ADD. UNIT (163 SPACES REQ.)
 PARKING PROVIDED: 163 SPACES (9 H.O. ACCESSIBLE)
 HANDICAP STALLS REQUIRED: 6 PROVIDED: 0
 LANDSCAPE REQUIREMENTS: MIN. LANDSCAPE SURFACE RATE: 5%

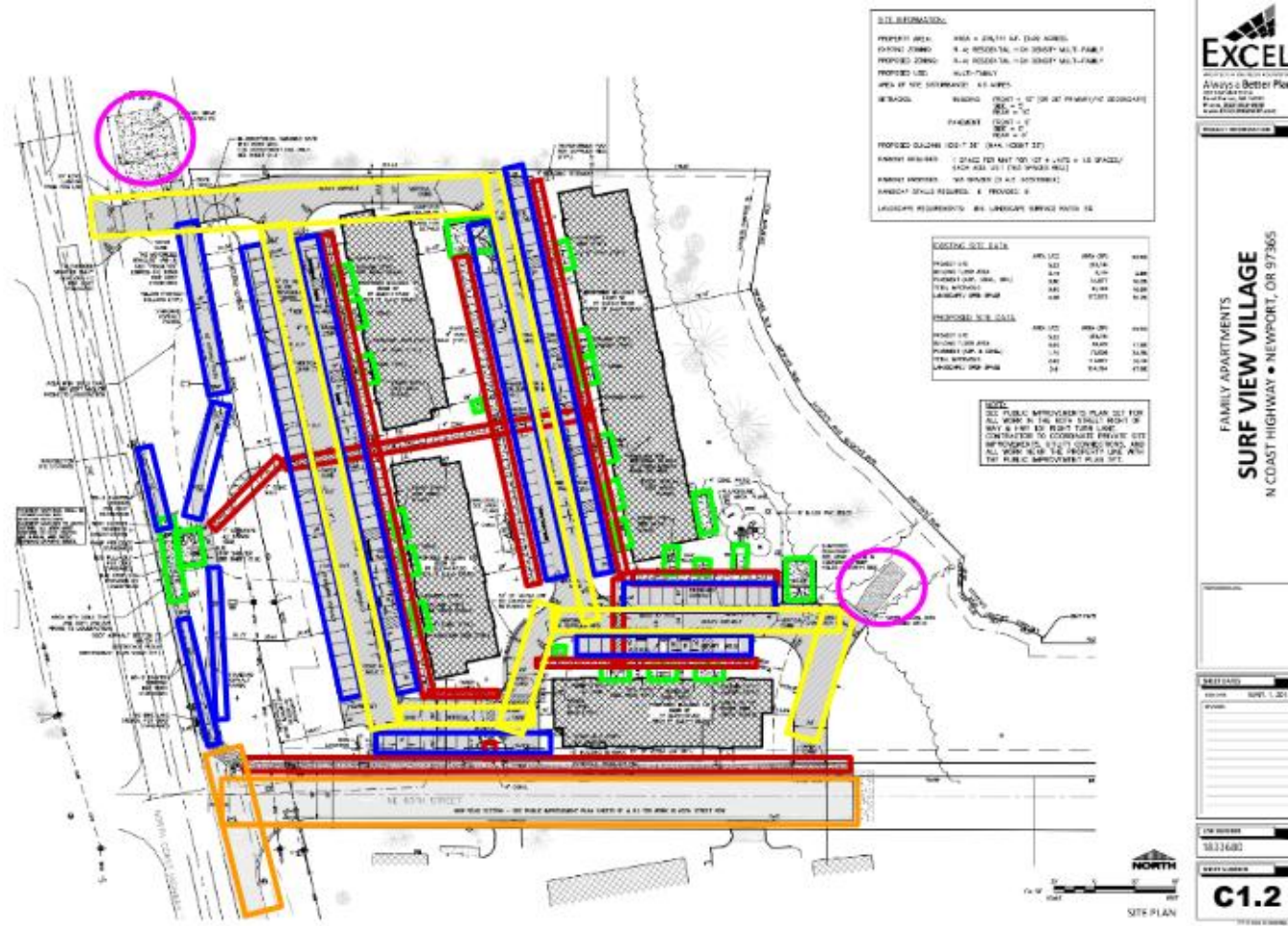
EXISTING SITE DATA			
PROPERTY LINE	AREA (AC)	AREA (SQ. FT.)	AREA (SQ. YD.)
TOTAL AREA	5.02	218,741	2,475
PAVEMENT (ASP., CONC., GRV.)	0.14	6,241	708
TOTAL PAVED	0.85	34,977	3,983
LANDSCAPE / OPEN SPACE	4.08	177,043	2,028

PROPOSED SITE DATA			
PROPERTY LINE	AREA (AC)	AREA (SQ. FT.)	AREA (SQ. YD.)
TOTAL AREA	5.02	218,741	2,475
PAVEMENT (ASP. & CONC.)	0.88	38,001	4,333
TOTAL PAVED	1.12	45,006	5,111
LANDSCAPE / OPEN SPACE	2.82	113,897	12,944
LANDSCAPE / OPEN SPACE	2.41	98,784	11,325

NOTE:
 SEE PUBLIC IMPROVEMENTS PLAN SET FOR ALL WORK IN THE BOTH STREET RIGHT OF WAY & HWY 101 RIGHT TURN LANE. CONTRACTOR TO COORDINATE PRIVATE SITE IMPROVEMENTS, UTILITY CONNECTIONS, AND ALL WORK NEAR THE PROPERTY LINE WITH THE PUBLIC IMPROVEMENT PLAN SET.

NOTE:
 SEE PUBLIC IMPROVEMENTS PLAN SET FOR ALL WORK IN THE BOTH STREET RIGHT OF WAY & HWY 101 RIGHT TURN LANE. CONTRACTOR TO COORDINATE PRIVATE SITE IMPROVEMENTS, UTILITY CONNECTIONS, AND ALL WORK NEAR THE PROPERTY LINE WITH THE PUBLIC IMPROVEMENT PLAN SET.





Week 1: (May 4 - May 6)

<p>Monday: Concrete Crew Crew Hours: 8 Set up: 0.5 hours Clean up: 1 hour Total possible work time: 6.5 hours Utilized work time: 6 hours (0.5 hour lunch/production delays)</p>	<p>Calculations: Concrete brought in: 20 cubic yards per hour Placement rate: 20 cubic yards per hour $234.23 \text{ cubic yards} / 20 \text{ cubic yards} = 11.71 \text{ hours of work}$</p>	<p>Labor Cost: Concrete Crew: \$300/h Hour multiplier: 8 Total Crew cost: \$2,400 Trucking cost per</p>
---	--	--

**APAO
Education
Foundation**

- **APAO Mid-Year Event, Sunriver (Jul 31 - Aug 2, 2025)**
- **College Scholarships**
- **High School Scholarships**
- **APWA/APAO Scholarship**
- **Hamburg Wheel Tracking Device**